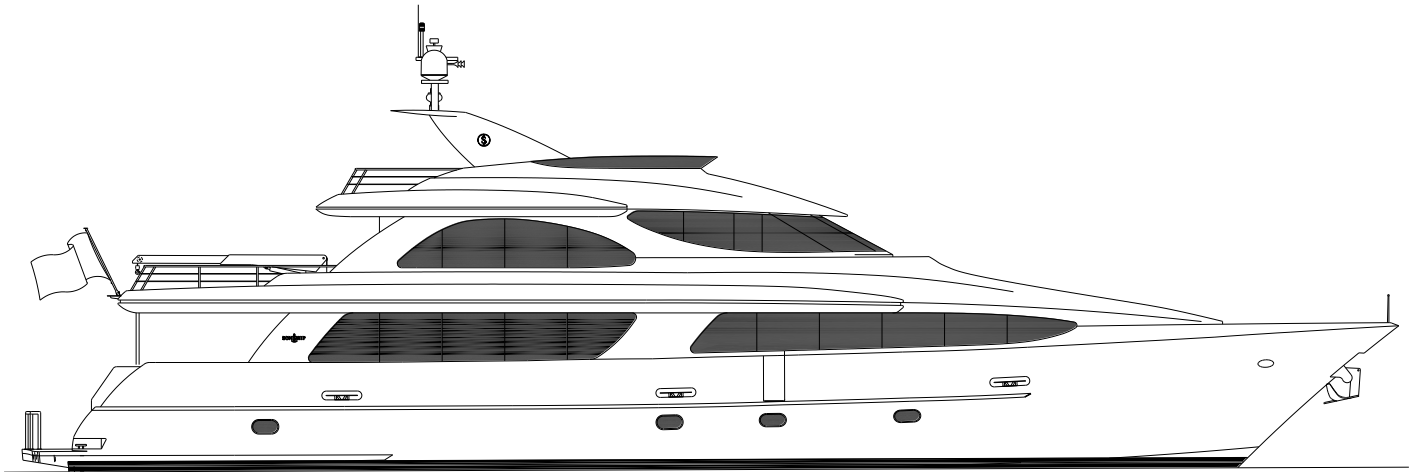


# SONSHIP



## 110 TRI DECK MOTOR YACHT

WEST BAY SHIPYARDS LTD.  
8295 RIVER ROAD, DELTA, B.C. CANADA V4G 1B4

---

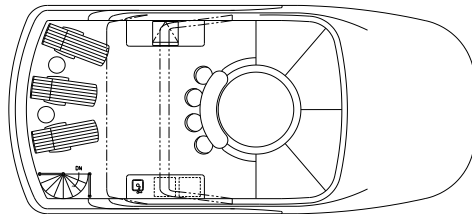
PHONE (604) 946-6226  
dreams@sonshipyachts.com

FAX (604) 946-8722  
www.sonshipyachts.com

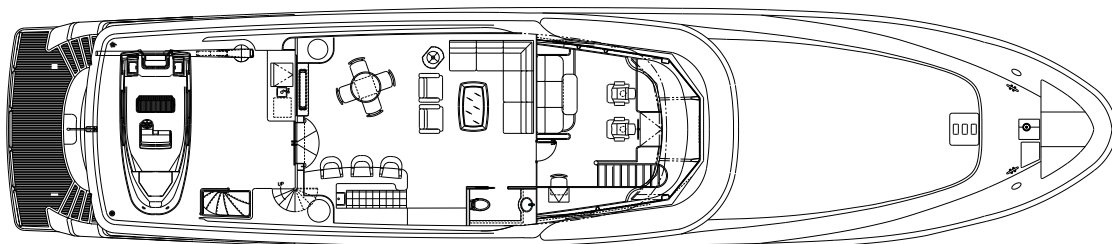
## 110 TRI DECK MOTOR YACHT SPECIFICATIONS

Length overall ..... 110' (33.5 m) Centerline hull length ..... 106' 3" (32.4 m) Waterline Length ..... 93' 5" (28.5 m) <b>Beam (molded)</b> ..... 24' 0" (7.3 m) Freeboard* ..... 11' 2" (3.4 m) Draft* ..... 5' 6" (1.7 m) Deadrise midship ..... 11°	Deadrise transom ..... 6° Fuel capacity* ..... 5,000 USG (18,927 L) Water capacity* ..... 800 USG (3,028 L) Holding tank* ..... 520 USG (1,968 L) Weight (approximate average displacement)* 250,000 Lbs. (113,398 kg)
---	---

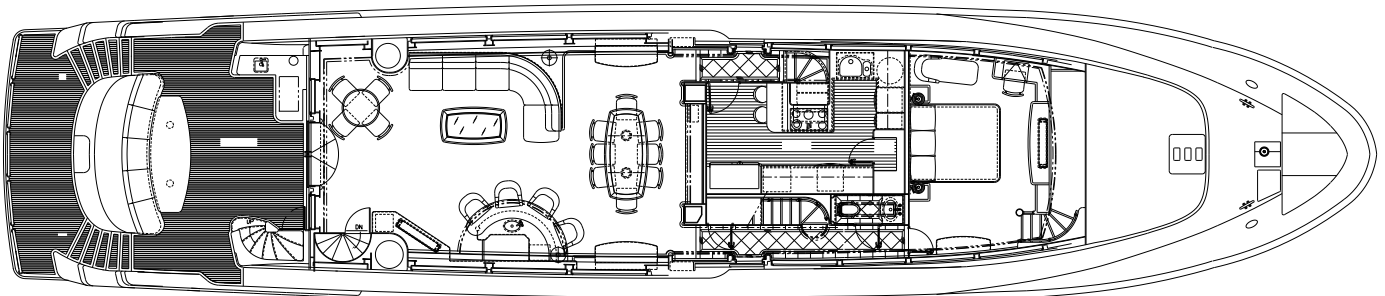
\*Please Note: Dimensions, weights and capacities where shown are approximate only. Speed, weight and other performance estimates, if shown or discussed, are estimates only and are not guaranteed



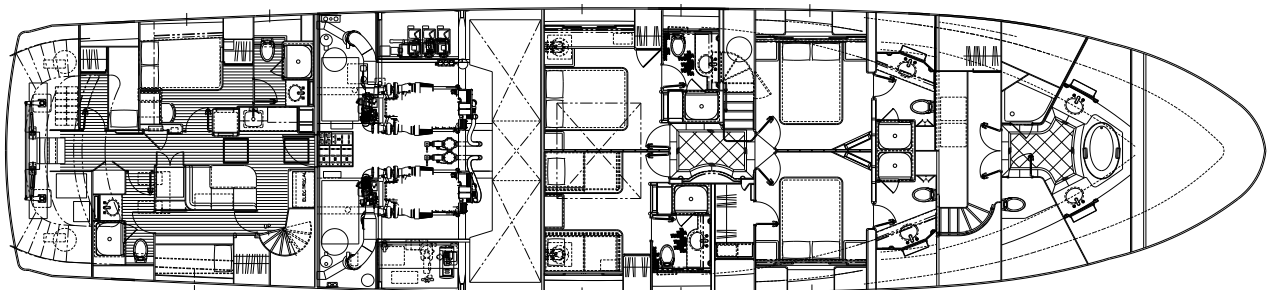
Sun Bridge



Sky Lounge Deck



Main Deck



Lower Deck

## 110 TRI DECK MOTOR YACHT SPECIFICATIONS

---

## Hull

---

- Construction: Laminate of composite fiberglass construction composed of E Glass and glass hybrid fabrics impregnated with polyester resins and vacuum bonded to linear and/or cross linked PVC foamcore.
- Rub rail: Solid 2" PVC (upper and lower guard) with stainless steel half-oval rub strip.
- Bottom paint system: (2) layers of anti-blister Epoxy and (3) coats of Micron CSC Extra black bottom paint.
- Paint system (above waterline): Two part high gloss polyurethane Awlgrip paint. Hull, house, and command bridge color to be West Bay White.
- Thru-hull fittings: All thru-hull fittings below waterline, bronze with bronze ball valves and bonded.
- Bulwarks: Fiberglass with polyurethane finish.
- Insulation: hull cored with PVC foam, which serves as insulation.

---

## Propulsion Systems and Running Gear

---

- Main engines: Two in MTU-DDC 12V2000 M96L engines @ 1920 HP EPA Tier III Compliant with (4) station MDEC controls, MDEC synchronizer and under water exhaust.
- Rudders: Stainless steel foil shaped rudders with stainless steel shaft; sized to vessel, painted with epoxy and anti-fouling.
- Rudder posts: Tides Marine strong seals boxes with steady rest bearings and framework.
- Propellers: Nybral 5 blade, LH and RH.
- Propeller puller: built to pull vessel's wheels.
- Shafts: 4" Aquamet 22 HS.
- Shaft logs: (2) fiberglassed into hull with cooling water slots and cutlass bearings.
- Shaft seals: Tides Marine dripless strong seals. Spare shaft seals (2) stored on shafts.
- Struts: stainless steel Vee design, painted with epoxy and anti-fouling, and with cutlass bearings.
- Stabilizer system: Wesmar RS 1200 with 12 sq. ft. fins (painted with epoxy and anti-fouling) with electric adjustable sensitivity gyro, control station in pilothouse.
- Steering system: power steering with dual engine driven pumps sized to vessel.
- Bow thruster: 16" Wesmar dual prop 50 h.p. hydraulic with (4) control stations.
- Stern thruster: 16" Wesmar dual prop 50 h.p. hydraulic with (4) control stations.

---

## Engine Room

---

- Ventilation: Delta "T" systems automated ventilation system to maintain engine room temperature and pressure. Quiet run and fully manual operation modes also provided. Variable speed intake and exhaust fans with programmable electronic speed control system, automatic fire dampers and Delta "T" moisture eliminator grille on intake.
- Generators: (2) 40 kW Northern Lights with sound shields, water lift mufflers, exhaust/water separator silencer, water temperature, oil pressure, and hour meters installed on panel in crew quarters.
- Air conditioning: Cruisair, 15 ton chilled water system with air handlers for the salon, pilothouse, sky lounge, galley, crew area and all staterooms.
- Air compressor: 240V 2 h.p. compressor to operate air horns with in-line water separator, regulator and 30-gallon accumulator tank.
- Fuel tank: 1/4" 5086 alloy aluminum. Approximate capacity: 5,000 US gallons.

- Compartmentalized design with port, center and starboard compartments
- Fuel filters: (2) Racor 75/1000 dual element, one set for each main engine, and (2) Racor filters, one for each generator.
- Fuel gauges: Sight tubes located on tank.
- Fire suppression system: Chemtech FM-200 engine room fire suppression system with manual/automatic controls located in crew quarters, and (1) 10 lb. dry chemical hand-held extinguisher.
- Lube oil change system: Oil exchanger pump and manifold, 80 US gallon lube oil tank with deck fill and vent, 90 US gallon lube oil waste tank with drain spigot and vent. Quick connect located inside transom door for fill and dockside discharge.
- Vibration dampers: Engines mounted on vibration mounts. All motors and pumps mounted with shock/isolation mountings where required.
- Watermaker: (1) Village Marine 1,200 GPD with fresh water flush and media sand filters.
- Water filters: (2) Aqua-flo WCT34 (located in thruster room).
- Floor: expanded PVC board with vinyl non-skid cover.
- Ceiling: perforated painted aluminum panels, T-bar style
- Insulation: a combination of fiberglass and barrier materials.
- Workbench: (2) stainless steel workbench tops, hinged, (1) port and (1) starboard with (1) 4" vise. Sink and faucet in starboard workbench top.

---

## Bilges

---

- Water tanks: (2) 1/2" polyethylene tanks with sight tubes and monitoring system with low water level shut-down and manual override, located in guest staterooms bilge. Control panel located in crew's lounge.
- Fresh water system: (2) 240 volt AC pressure pumps, (1) 24 volt DC pressure pump for emergency back-up, expansion tanks on pressure side.
- Hot water system: (2) 240 volt AC 50 gallon hot water tanks with circulation pump and expansion tank, all lines insulated.
- Gray water system: (2) gray water sumps with screens, (1) located in forward starboard guest stateroom closet with (1) 120 volt AC pump and (1) 24 volt DC backup pump; (1) sump located in crew's lounge with (1) 120 volt AC pump.
- Holding tanks: (2) composite integral construction tanks with inspection hatches, 240 volt AC diaphragm type pump with 24 volt DC back-up pump for tank discharge, (1) located midships beneath lower foyer; (1) located aft beneath crew's lounge.
- Bilge pumps: (8) remote mounted Rule 3700 24 volt electric bilge pumps with manual/automatic switches and high water alarms, (1) pump in each compartment, (2) in engine room.
- Bilge finish: epoxy painted, white in forward thruster room, lazarette and engine room, other spaces are gelcoat finish.

---

## Electrical Systems and Components

---

- Bonding system: All underwater metal bonded to an integral copper buss bar running fore-and-aft through vessel and connected to (4) Z1 zinc anodes installed on hull bottom at transom, secured with bronze studs and tied to the bonding system.
- AC electrical system overview: (2) 40 kW generators and (4) - 100 ampere shore power inlets. Automatic switching between Generators and shore power sources.

- Shore power: (2) 100 ampere, 100 ft. shore power cords with Glendinning electrical feed units, located at transom, (1) port side and (1) starboard side, (2) 100-ampere shore power receptacles in trunk cabin, forward deck, and (2) 100 ft. shore power cords.
- The port aft shore power will feed 35KVA Shore Power Converter which will allow the user to connect to 1 or 3 phase, 200 to 480 volts and up to 150 amperes, (using 2 - 100 ampere shore power cords)
- The starboard shore power or one of the two forward receptacles can feed the Shore Power Converter from 2 - 100 ampere shore power receptacles to provide up to 150 amperes into the vessel from the Converter.
- The other forward shore power receptacle will provide connection to 100 ampere, 208 or 240 volt, 1 phase dock power via a "Yacht-O-Matic" automatic shore power voltage selector and an isolation transformer. To alleviate damage from low dockside voltage, a "Low Voltage Cutout" is provided on this shore power inlet.
- Distribution shall be accomplished via automatic switching, using industrial contactors and a Programmable Logic Controller feeding a "split buss" system with a tie switch.
- The Converter and Generator outputs to the vessel shall be 120/240 volt, 1 phase, with a total current availability from the two generators through the split buss of 285 amperes. Or, a maximum shore power utilizing 2 - 100 ampere sources through the Converter (150 amperes) plus an additional 100 amperes utilizing the split buss through the dedicated 100 ampere forward shore inlet from a 3rd shore power source. Total (250 amperes on shore power).
- Connection to European or practically any stable shore power source around the world that falls within the parameters listed above is possible with the Shore Power Converter unit.
- A unique "Load Switching Panel" for 120 volt loads allows the user to "Balance the Loads" between "L1" AND "L2" to achieve the best use of available dockside power and to reduce undue strain on the generators due to unbalanced loading.

---

## Electrical Systems and Components, cont....

---

- Three main 120/240 volt custom Square D electrical Distribution Panels with spare spaces for future equipment are situated in the equipment room and in the crew's lounge, aft port cabinet.
- Note: During times of heavy electrical requirements both generators and multiple shore power connections may be required to power the vessel adequately.
- Telephone and cable television receptacles: (2) cable-TV/telephone receptacles, one near each transom shore power inlet, and (1) cable-TV/telephone receptacle located in forward trunk cabin.

- (2) D.C. distribution panels with engraved faceplates, (1) in port pilothouse cabinet, (1) in crew's lounge, forward starboard cabinet.
- Exterior lighting: Lighting at house sides, foredeck, aft deck stairs, aft deck overhead, and, sky lounge deck and sun bridge.
- Interior lighting: refer to lighting layout.
- Lighting general: Lutron 3000 series, 6-zone lighting on main deck, Vimar and Decora receptacles and switches in other areas.
- Navigation lights: Perko lights sized to vessel per USCG regulations
- Electronic navigation and communication equipment: see attached list.
- Batteries and chargers: vessel's D.C. power comprised of the following systems:
  - 24 volt, 800AH ship's battery – 12 only Industrial Deep Cycle 2 volt Cells with watering system to supply back-up 24 volt pumps, bilge pumps and 24 volt electronics.
  - 12 volt 200 AH battery bank - deep cycle sealed battery (8D) to supply 12 volt electronics, accessories and emergency lighting, charged by (1) 45 ampere alternator and (1) 40 ampere 3 stage charger;
  - 24 volt 8D-1400 (2-8D's) sealed lead-calcium starting battery bank to start the engines, with back-up switching to the ship's bank for emergency starting.
  - A 12 volt 8D-1400 sealed lead-calcium starting battery to start generators, with back-up switching to ship's 12 volt battery set, charged by a 45 ampere alternator and the 40 ampere 3 stage charger;
  - 24 volt battery (2-RV27 deep cycle sealed batteries) to power MDEC electronic engine control system, charged by one of the engine driven 24 volt 65 ampere alternators and an output from the 35 ampere auxiliary charger;
  - 12-volt emergency sealed H31 DCM deep cycle battery located in pilothouse to supply power to VHF radios and GPS, charged by (1) 15 ampere charger, and a one-way feed from the 12 volt ship's system.
  - Multiple output chargers to service batteries: (1) 24 volt 35 ampere, (1) 12 volt 40 ampere and (1) 12 volt 15 ampere.
- Alternators: (2) 24 volt 65 ampere HD alternators, (1) on port and (1) on starboard main engines, and (2) 12 volt 45 ampere alternators, one on each generator.
- West Bay 'Charge Directors' to direct charge from alternators on the main engines and generators to various battery banks as needed.
- All Ship's batteries, 12 and 24-volt and main engine alternator output Positive (+) supply cables have ANL fuses to protect against overcurrent and accidental short circuit. Main battery cutout switches are provided for all battery sources.
- Metering is provided for both A.C. and D.C. voltage and current.

---

### Decks, Sky Lounge Deck, Sun Bridge and Miscellaneous Exterior Items

---

- Doors: port and starboard doors on custom West Bay slides.
- Trunk cabin storage: compartment for stowage of boarding ladder, shore power cable, dock lines and fenders, hatch with trunk access steps and pie eyes forward for shore power cable access.

- Sunpad: Sunbrella upholstered dry-fast foam cushions with white Stamoid weather cover.
- Step plates: (2) chromed cast bronze West Bay step plates located at side boarding gates.
- Burgee pole: 316 stainless steel.
- Exterior decks: All exterior decks painted non-skid over composite unless otherwise specified.
- Drains: similar to other West Bay SonShip yachts, and/or drain tower system.
- Docklines: (8) total – (6) 50ft x 1" and (2) 75ft x 1", nylon with 36" eye splice, black.
- Fenders: (6) black, with 20ft x 1/2" lines, black.
- Custom leather fender hooks (black) with cam cleats (6).
- Cleats and hawse holes: (8) polished stainless steel hawse holes with cleats, (4) starboard, and (4) port. (2) Stainless steel cleats in transom corners to accommodate cross-tying, (1) port and (1) starboard, and (2) pop-up cleats on swimgrid for tender tie off, (1) port and (1) starboard.
- Fuel system. Fuel fills (1) port and (1) starboard, midship deck with dual fill/vent pipes vented overboard for fast filling. A second smaller vent, vented overboard, provided for normal operation.
- Water system: two fills for water tanks, (1) forward, and (1) midship starboard deck, vented overboard with 1 1/4" lines for fast filling. On board water filtration system for tank fill and city water system. City water connection Starboard transom (1).
- Fiberglass hatch and combing for chain locker.
- Anchor: (1) 250lb Davis Stingray galvanized anchor with stainless steel bow plate, roller and 1/2" chain stopper.
- Anchor chain: 350ft 1/2" galvanized.
- Windlass: 4,500lb Muir hydraulic with controls at pilothouse and foredeck.
- Anchor chain washdown system: 120-volt raw water pump with spray nozzles directed at incoming chain, controlled at pilothouse and foredeck.
- Fresh water washdown tap located in base of sunpad.
- Boarding stair: 7-step 24" with brackets at port and starboard gates, stair stowed in trunk cabin.
- Vessel's name lights at exterior sky lounge, (2) sets Hella low voltage display lights switched in pilothouse, (1) set port and (1) set starboard.

---

### Aft Deck

---

- Stairs to swimgrid with stainless steel grabrails, port and starboard.
- Gates: stainless steel, port and starboard aft.
- Fresh water washdown tap located in port storage locker.
- Wet bar with Corian top, sink with faucet, refrigerator and icemaker.
- Gasoline tank: 100 gallon with gauge located in aft deck bulwarks, starboard, including 12-volt dispensing pump with nozzle and hose.
- Storage lockers located in port bulwarks.
- Stairs: spiral staircase, FRP, up to sky lounge with handrail and storage locker below.
- Settee: molded fiberglass with dry-fast foam cushions, exterior Sunbrella fabric and white Stamoid weather cover.
- Table: single table with Corian top and (2) stainless steel fixed legs.
- Support posts: polished stainless steel, supporting boat deck and functioning as boat deck drains.
- Salon door: stainless steel framed glass sliding electric / manual door, counter balanced with belt pulley system.
- Control station: (1) pull-out station including electronic engine controls, start/stop controls for main engines, jog steering lever, rudder indicators, and thruster controls, located in port bar cabinet enclosure.

- Deck surface: teak decking from salon door aft to and including stairs to swimgrid and swimgrid.
- (1) 5-lb. dry chemical hand-held fire extinguisher mounted in cabinet under sink.

---

### Swimgrid

---

- Show er: hand-held with hot and cold water located in aft bulwarks, port side, beside gate.
- Crew entry door: watertight hinged door, painted to match vessel.
- Underwater lights: (4) large high intensity LED style lights, installed in hull transom below swimgrid, below waterline (type to be serviceable without hauling boat).
- Safety Rails (5): N-Shaped removable, stainless steel.
- Capstans: (2) 24 volt capstans 600 lb. Muir VC850 with single enable switch located inside crew entry door, and each with single foot switch, (1) port and (1) starboard, mounted on transom wing corners with cleats and chafe plates. Swimladder: removable ladder, 24" mounts on swimgrid.

---

### Sky Lounge Deck

---

- Hatch (1) fiberglass hinged hatch to aft deck with stainless steel grabrail.
- Fresh water washdown tap located on vertical aft face of wet bar cabinet
- Wet bar: Corian top, stainless steel sink with faucet U-Line combo refrigerator/icemaker, barbecue: DCS 27D-BQ, propane fuel, with stainless steel liner, port side, with twin 20 lb. aluminum vertical tanks properly vented, mounted in base of bar cabinet, aft, with propane sniffer and alarm, white Stamoid weather cover and TV jack
- Settee: molded settee with dry fast foam cushions, exterior Sunbrella fabric with white Stamoid weather cover, seat bottoms hinged with storage below.
- Table: Corian top 28" fixed height with two aluminum legs and
- Davit: Steelhead 2,500lb davit with 14' boom, 240 volt electric/hydraulic with power boom luff, rotation and lift, painted to match vessel.
- Flag pole: removable stainless steel pole to fit 5' x 8' flag, located on aft edge of boat deck, centerline with proper eyelet spacing.

---

### Sky Lounge Deck, cont...

---

- (2) Floodlights on sky lounge aft overhang illuminating swimgrid, (1) port & (1) Starboard.
- Life raft: (2) 8 man life rafts with hydrostatic release, installed in cradles on starboard side of boat deck.
- Personal flotation devices: (15) Coast Guard approved adult PFDs with water lights stowed in settee base.
- Ring buoys: (2) 24" diameter secured to interior bulwark, mounted on bar cabinet and settee back.
- (1) 5 lb. Dry chemical hand-held fire extinguisher mounted under wet bar sink. Stairs to sun bridge with storage below.
- Door: stainless steel framed glass, hinged double door to sky lounge.

---

### Sun Bridge

---

- Fresh water washdown tap located below starboard sink cabinet.

- Arch/mast: FRP arch type for electronics, anchor light, deck lighting, searchlight.
- Wing stations: (2) including electronic engine controls, horn control, thruster controls, rudder indicator and jog lever, located (1) port wing and (1) starboard wing, with white Stamoid w eather covers.
- Windscreen: custom venturi w ith tinted 1/4" plexiglass in a stainless steel frame.
- U-Line fridge in port cabinet.
- Hot tub: 6 person w ith reinforced tub cover (colour: White Sands), w hite Stamoid w eather cover. Corian bar top, (4) bar stools w ith aluminum legs and Sunbrella upholstered cushions and w hite Stamoid w eather covers
- Compass: (1) Ritchie Navigator located on port dash.
- Searchlight: (1) Carlyle Finch located on mast w ith (2) controls, (1) located at the Pilothouse dash and (1) located at port control station.
- Air horns: Kahlenberg w ith chrome finish.

---

### General Interior

---

- Joinery:
  - Wood: ¼ saw n American cherry with semi-gloss finish.
  - Joinery accent: Carpathian elm veneer.
  - Passage doors: solid w ood stiles and rails w ith Carpathian elm veneered recessed panels.
  - 7/8" reveal;
  - Cabinet fronts: wood veneer panels, solid w ood listings.
  - Lockers, closets and drawer bottoms throughout staterooms: aromatic cedar lined.
- Hardware:
  - Passage door handles: Baldwin, Crew Area, Forward & Port Staterooms colour: Satin Nickel, all other areas colour: Polished Brass;
  - Cabinet push button knobs: Hafele, Crew Area, Forward & Port Staterooms and Heads colour: Polished Chrome & Matt Nickel, all other areas colour: Polished Brass & Chrome.
- Windows: frameless adhesive bonded, 1/4" Solar Gray heat treated laminated glass. Forward pilothouse windows 3/8" heat treated laminated, clear.
- Insulation:
  - House: cored w ith various materials w hich provide insulation.
  - Overhead surfaces: fibreglass insulation installed for both thermal and acoustic properties.
- Floors:
  - Carpet throughout, unless otherwise specified.
- Headliner: vinyl throughout, Luxor II, Vellum.
- Show er enclosures: clear glass with aluminum frames, unless otherwise specified, colour: Bone.
- Entertainment equipment: see list below .
- Alarm system w ith (2) keypad controls, bell and horn and all exterior doors w ired.

---

### Salon

---

- Bar area: w ith sink, faucet, liquor bottle storage, and U-Line icemaker. Upper and lower stone countertops. Inside face between upper and lower tops to be stainless steel Marble slab floor, w ith (4) loose bar chairs and 2.5 lb. dry chemical hand-held fire extinguisher installed in cabinet beneath sink.
- Sofa L-shaped, round corners / no arms.
- Coffee table.

- Entertainment cabinetry w ith lift for 42" plasma TV and DVD/CD storage aft of bar pit, space for entertainment system in aft cabinet, starboard aft area, w ith stone slab top.
- Wainscoting (port) beneath w indows, with cherry veneer face, ¼ round cherry edge and granite top.
- Lambrequin panels w ith wallcovering and solid w ood trim, w allcovering.
- Window treatment: silhouettes w ith Romanshades.
- Rope lighting in soffits, port, starboard and aft.
- (1) table lamp for forward corner shelf behind sofa.
- Ceiling detail: w hisper wall headliner panels and crown molding.
- Floor entrance: marble slab w ith half moon shape.
- Custom w ood mullion covers.
- Games table w ith (4) chairs.
- Crew entrance in starboard aft corner.

---

### Dining Area

---

- Loose furniture: custom made dining table w ith (8) chairs.
- Storage/display area forward w ith (2) vertical storage cabinets w ith w ood fronts, (1) port and (1) starboard. Stone slab countertop, (4) doors below, w allpaper w ith art w ork and w all lights (port and starboard) and soffit above w ith rope lighting and (3) display lights.
- (2) sconces on the fwd center wall, (1) port and (1) starboard.
- Rope lighting in soffits, port and starboard.
- Storage cabinets (2) – (1) port and (1) starboard w ith granite slab tops, providing custom storage for dishw are, cutlery and glassw are.
- Ceiling detail above dining table: w hisper wall headliner panels and crown molding.
- Lambrequin panels w ith wallcovering and solid w ood trim, w allcovering.
- Custom w ood mullion covers.
- Window treatment: silhouettes w ith Romanshades.
- Crown molding
- Entrance Door: hinged stainless steel framed glass.

---

### Galley

---

- Granite slab countertop.
- Granite backsplash on aft bulkhead.
- Granite backsplash strip around countertop perimeter.
- Floor material: Karndean strip-flooring.
- Sink: undermounted, w ith faucet, Little Butler hot w ater dispenser.
- Refrigerator: model: Sub Zero 48" side-by-side, w ith w ood front.
- Refrigerator: model: Sub Zero under.
- Cooktop: model: Dacor.
- Oven: Double w all oven, electric, model: Dacor.
- Microwave/exhaust fan: installed above cook top, model: Dacor
- Trash compactor w ith stainless steel front: model: Kitchenaid.
- Dishw asher w ith stainless steel front: model: Kitchenaid.
- Warming drawer w ith stainless steel front: model Dacor PW030 (curved front)
- Wine cooler:
- Disposal.
- Breakfast bar w ith (2) barstools.
- Pantry in starboard forward corner.
- Galley cabinets w ith storage cupboards and drawers.
- Corner cabinet forward w ith 3-tier lazy susan style round shelves.
- Utensil drawers (4).
- (1) 5-lb. dry chemical hand-held fire extinguisher mounted in cabinet under sink.

- Window treatment: silhouettes.
- Sound insulation material installed under galley cabinets and galley floor to deaden sound transfer to guest staterooms.

---

### Mid ship Companionways, Port and Starboard

---

- Floor material: stone tile w ith w ood baseboards, w ith rope boarder.
- Lambrequin panels w ith wallcovering and solid w ood trim, w allcovering .
- Window treatment: silhouettes.
- (2) Access doors to exterior side decks on West Bay slides, (1) port and (1) starboard.
- Closet w ith metal hanging rod, aromatic cedar lining, starboard side.
- Stairs to pilothouse w ith w ood handrail and standoff fittings, starboard.
- Stairs to lower foyer w ith w ood handrail and standoff fittings, port.
- Wainscoting below w indows w ith ¼ round edge, reveal, and cabinet door style fronts, utilizing available storage space below .
- Wallcovering: port and stairw ay: w ood veneer.

---

### Day Head

---

- Floor material: stone tile including w ood baseboard.
- Vanity w ith sink, model, undermounted, w ith faucet, and 2-door cabinet below .
- Headhunter toilet, bone, w ith brass flush knob.
- Vanity top: granite, 3/4" slab w ith 5" high granite backsplash.
- Accessories: towel ring, paper holder and soap dish.
- Mirror w ith decorative frame, forward, w ith w allcovering around perimeter of mirror.
- Wainscoting cherry front from baseboard up to granite rail aft and inboard w alls. Mirror, three panels w ith beveled edges above w ainscoting on inboard w all, wallcovering, above w ainscoting on aft walls.
- Wallcovering from baseboard to ceiling on outboard w all.
- Ventilation fan on separate switch.
- Headliner: vinyl, pattern: Luxor II Vellum.
- 

---

### Pilothouse

---

- Windshield wipers and washers: three marine grade w ith two speeds, delay, wash and park, and synchronized movement.
- Alarm status-monitoring system. Items as follows:
  - (5) Heat sensors, (1) in engine room, (1) in pilothouse, (1) in forward companionw ay, (1) in lower foyer and (1) in crew 's lounge, tied to general alarm;
  - (4) smoke alarms, (1) in forward companionw ay, (1) in galley, (1) in crew 's lounge, and (1) in lower foyer;
  - (2) grey w ater sump indicators, (1) for sump in crew area, and (1) for sump in forward starboard guest stateroom closet;
  - Navigation lights indicator;
  - Anchor light indicator;
  - Hydraulics high temperature indicator;
  - Hydraulics low pressure indicator;
  - Main engine exhaust high temperature indicator;
  - Engine room fire suppression system activation indicator;

- Bilge pump status panel w ith alarm, pump “run” and high w ater lights - (1) sensor each in forward guest stateroom, thruster room, midship guest staterooms (2), engine room (2), crew ’s area and lazarette, w ith Mute and lamp test buttons.
- Chart light: (1) 24 volt DC chart light, starboard.
- Compass: (1) KVH electronic compass located on dash.
- Helm steering w heel: stainless steel 24" Cole.
- MDEC controls for main engines.
- Sw itching for:
  - Windlass;
  - Thruster controls;
  - Wipers;
  - Horn;
  - Bilge pumps;
  - Stabilizer system;
  - Navigation lights;
  - Anchor light;
  - Search light;
- Settee: bench seat, raised on 1-step, fabric-covered.
- Table: rectangular-shaped granite w ith stainless steel pedestal.
- Storage locker, starboard.
- Helm console w ith covered dash cap.
- Electronics: see attached list.
- Flare kit.
- Ship’s bell: per US Coast Guard regulations.
- Air horn: hand-held.
- Stidd helm chairs (2).
- Glass privacy panels (Sw itch Glass), located on aft w all port and starboard.
- Medical safety kit.
- 2.5 lb. dry chemical hand-held fire extinguisher.
- Space for air conditioning units, electrical and other machinery (below helm).

---

#### Sky lounge

- Entertainment cabinetry w ith lift for 42" plasma TV, stereo and DVD/CD storage on aft bulkhead.
- Bar area: w ith sink, faucet, liquor bottle storage, upper and low er stone countertops. Inside face betw een upper and low er tops to be stainless steel Marble slab floor. Loose bar chairs (3) and 2.5 lb. dry chemical hand-held fire extinguisher installed in cabinet beneath sink.
- Wainscoting (port) beneath w indows, w ith cherry veneer face, ¼ round cherry edge and granite top
- Lambrequin panels w ith wallcovering and solid w ood trim, w allcovering
- Window treatment: silhouettes w ith Romanshades
- Rope lighting in soffits, port, starboard and aft.
- Ceiling detail: w hisper wall headliner panels and crown molding.
- Floor entrance: marble slab w ith half moon shape.
- Custom w ood mullion covers.
- Entertainment cabinetry w ith lift for 42" plasma TV, stereo and DVD/CD storage on aft bulkhead.
- Sofa: L-shaped, squared corners / no arms.
- Coffee table.

---

#### Master Stateroom

- Privacy Door.
- Window treatment: silhouettes.
- Custom w ood mullion covers.
- Bed: king size w ith 9" innerspring mattress, cedar lined storage drawers beneath.
- (1) mattress cover, (1) bedspread, (2) pillows w ith shams, (1) sheet set.
- Bed keeper: w ood, w ith rope lighting beneath keeper.

- Cherry veneer headboard at bottom w ith three mirrored panels above w ith bevel-edged, and soffit w ith rope lighting above. Center mirror to be larger.
- (2) sw ing-arm reading lamps on headboard, (1) port and (1) starboard of mirror.
- Vanity w ith mirror and stool.
- Chaise lounge port side, aft of vanity.
- Nightstands: (2) Carpathian elm top w ith ¼ round w ood edge, single drawer and cupboard below, (1) port and (1) starboard (bedsides).
- Closet: starboard side, aromatic cedar lined, w ith light, 2.5 lb. dry chemical hand-held fire extinguisher, and metal hanging rod.
- Wallcovering: vinyl.
- Ceiling detail: crown molding.
- Entertainment cabinetry w ith lift for 42" plasma TV, stereo and DVD/CD storage forward.
- Dresser, starboard side.
- Curved staircase to access head and dressing area.

---

#### Dressing Area, Master Head

- Full height closet, cedar lined w ith stainless steel rod, port side.
- Linen storage in aft cabinet.
- Washer/dryer (side-by-side 24") in aft cabinet
- Dresser w ith storage above in aft cabinet
- Safe: Chubb, on outboard w all of w alk-in closet.
- Double entrance doors to head.
- (2) Vanities w ith granite countertops, backsplash 6" high, undermount sink w ith faucet, (1) port and (1) starboard.
- (2) mirrored medicine cabinets above sinks, (1) port and (1) starboard.
- Tub: bone, jacuzzi, model: Venco.
- Tub w alls: material: marble slab.
- Show er door: custom, style: frameless w ith polished fittings.
- (1) Headhunter toilet, bone.
- Accessories: towel bars, (1) paper holder, (2) soap dishes, (2) towel rings, (2) robe hooks, (1) set port and (1) set starboard.
- Headliner: vinyl.
- Floor: marble tile.
- Vinyl w allcovering.
- Ventilation fan on separate sw itch.
- Soffits w ith rope lighting, port and starboard, outboard.

---

#### Lower Mid ship Foyer

- Floor: stone tile w ith w ood baseboards.
- Cherry w ood console cabinet w ith marble slab top w ith (2) Carpathian elm recessed panel doors, starboard.
- Decorative mirror w ith beveled edge above console.
- Ceiling detail: dropped soffit, to mimic cabinet below w ith cherry soffit face and crown molding.
- Wallcovering port, starboard, and aft w alls.
- Forw ard w all and stairs of low er foyer to be w allcovering.

---

#### Starboard Guest Stateroom (Aft)

- Portlight: (1) Freeman 14.5"x24" oval, opening w ith screen and privacy cover.
- Window treatment: shutters painted to match Formica, Horizontal surface behind shutters to be w allcovering.
- Beds: (2) modified single size w ith 7" innerspring mattresses, (1) port and (1) starboard.
- Headboard details to match master stateroom design
- (2) Mattress covers, (2) bedspreads, (2) pillows w ith shams, (2) sheet sets.

- Bed keeper: w ood, w ith rope lighting beneath keeper
- Mirror on aft bulkhead above nightstand, w allcovering to port and starboard of mirror.
- Reading lights affixed to port and starboard w alls, aft.
- Single nightstand w ith lamp betw een beds w ith ¼ round w ood edge, and Carpathian elm top, three drawers.
- Hanging locker: aromatic cedar lined, w ith light and 2.5 lb. dry chemical hand-held fire extinguisher, forward of starboard bed.
- Entertainment center w ith TV cabinet to accommodate 23" LCD TV above w ith entertainment equipment and dresser drawers below .
- Soffits w ith rope lighting, starboard.
- Vinyl w allcovering.
- Hatch providing access to holding tank.
- Ceiling detail: crown molding.

---

#### Starboard/Port Guest Heads (Aft)

- Portlight: (1) Freeman 14.5"x 24" oval, opening w ith screen and privacy cover.
- Window treatment: shutters painted to match Formica. Horizontal surface behind shutters to be Formica. Vertical surfaces behind shutters to be w allcovering.
- Vanity w ith solid granite countertop, undermounted sink, faucet and cabinet w ith single drawer and doors beneath sink and cherry veneer kick.
- Lights on both sides of vanity mirror.
- Medicine/storage cabinet above toilet.
- Mirror w ith w ood frame and rope lighting on forward bulkhead above sink.
- Show er stall, bone.
- Show er set.
- Headhunter toilet, bone, w ith brass flush knob.
- Accessories: towel bars, paper holder, soap dish, towel ring, robe hook.
- Headliner: mirrored.
- Floor: marble tile.
- Vinyl w allcovering.
- Ventilation fan on separate sw itch.
- Linen storage.
- Privacy door.

---

#### Port Guest Stateroom (Aft)

- Portlight: (1) Freeman 14.5"x24" oval, opening w ith screen and privacy cover.
- Window treatment: shutters painted to match Formica. Horizontal surface behind shutters to be w allcovering.
- Bed: queen size w ith 7" innerspring mattress, w ith storage under bed.
- (1) Mattress cover, (1) bedspread, (2) pillows w ith shams, (1) sheet set.
- Bed keeper: w ood, w ith rope lighting beneath keeper and storage drawers
- Headboard to match master stateroom design.
- Mirror on aft bulkhead above bed, w allcovering to port and starboard of mirror.
- Nightstands: (2) w ith lamps, ¼ round w ood edge, Carpathian elm top, three drawers, (1) port and (1) starboard.
- Dresser w ith drawers, ¼ round w ood edge, Carpathian elm countertop, outboard.
- Hanging locker: aromatic cedar lined w ith light and 2.5 lb. dry chemical hand-held fire extinguisher, forward of dresser, outboard.
- Entertainment center w ith TV cabinet to accommodate 23" LCD TV above w ith entertainment equipment and dresser drawers below .

- Soffits with rope lighting, port.
- Vinyl wallcovering.
- Hatch providing access to bilge area.
- Ceiling detail: crown molding.
- Portlight: (1) Freeman 14.5" x 24" oval, opening with screen and privacy cover

---

#### Starboard Guest Stateroom ( Forward)

---

- Window treatment: shutters painted to match Formica, Horizontal surface behind shutters to be Formica. Vertical surfaces behind shutters to be wallcovering
- Bed: queen size with 7" innerspring mattress, with storage under bed.
- (1) Mattress cover, (1) bedspread, (2) pillows with shams, (1) sheet set.
- Headboard details to match master stateroom design
- Bed keeper: wood, with rope lighting beneath keeper
- Hanging locker: aromatic cedar lined, with light and 2.5 lb. dry chemical hand-held fire extinguisher.
- Entertainment center with TV cabinet to accommodate 23" LCD TV above with entertainment equipment.
- Soffits with rope lighting, starboard.
- Vinyl wallcovering.
- Ceiling detail: crown molding.

---

#### Starboard/Port Guest Heads (Forward)

---

- Vanity with solid granite countertop, undermounted sink, faucet and cabinet with single drawer and doors beneath sink and cherry veneer kick.
- Lights on both sides of vanity mirror.
- Medicine/storage cabinet above sink.
- Mirror with wood.
- Shower stall, bone.
- Shower set.
- Headhunter toilet, bone.
- Accessories: towel bars, paper holder, soap dish, towel ring, robe hook.
- Headliner: mirrored.
- Floor: marble tile.
- Vinyl wallcovering.
- Ventilation fan on separate switch.
- Privacy door.
- Linen storage.

---

#### Port Guest Stateroom (Forward)

---

- Portlight: (1) Freeman 14.5"x24" oval, opening with screen and privacy cover.
- Window treatment: shutters painted to match Formica, Horizontal surface behind shutters to be Formica. Vertical surfaces behind shutters to be wallcovering
- Bed: queen size with 7" innerspring mattress, with storage under bed.
- (1) Mattress cover, (1) bedspread, (2) pillows with shams, (1) sheet set.
- Headboard details to match master stateroom design
- Bed keeper: wood, with rope lighting beneath keeper
- Storage locker: aromatic cedar lined, with light and 2.5 lb. dry chemical hand-held fire extinguisher.
- Entertainment center with TV cabinet to accommodate 23" LCD TV above with entertainment equipment.
- Soffits with rope lighting, port.
- Vinyl wallcovering.
- Ceiling detail: crown molding.

---

#### Crew's Lounge

---

- Emergency fuel shut-off: wire pull in bilge beneath floor.

- AC/DC switch panels in cabinet with doors, starboard, aft of engine room bulkhead.
- AC switch panels in cabinet with doors, port, forward of aft storage locker.
- Galley area, portside, with Corian countertop and 3" backsplash, undermounted sink with faucet, 3-door cupboard beneath sink, and 4 drawers forward, refrigerator in cabinet aft of sink, with TV cabinet above to accommodate 15" LCD TV.
- Washer/dryer: starboard, aft with 2 access doors hinged 180°.
- Microwave oven: installed in cabinet above counter, forward.
- 2 door cabinet between microwave and TV cabinet.
- Full height storage locker forward of microwave.
- (1) 10 lb. Dry chemical hand-held fire extinguisher mounted under sink.
- Floor: Karndean vinyl strip flooring.
- (2) access hatches, (1) to bilge and (1) to grey water sump.
- L-shaped settee on raised base with Corian table and (2) 3" stainless steel legs, Drawer in aft seat base.
- Aluminum steps up to swimgrid.

---

#### Captain's Stateroom

---

- Portlight: (1) Freeman 14.5"x 24" oval, opening with screen and privacy cover with matching wallcovering.
- Bed: modified queen size with 7" innerspring mattress.
- (1) Mattress covers, (1) bedspread, (2) pillows with shams, (2) sheet set.
- Bed keeper: wood with keeper and storage drawers.
- (2) Reading lights affixed to aft bulkhead, (1) port and (1) starboard.
- Desk with ¼ round cherry edge, laminate top to match cherry, and three drawers, port side, aft, inboard.
- Loose desk chair.
- Hanging locker: aromatic cedar lined with light and 2.5 lb. dry chemical hand-held fire extinguisher, port side, forward of bed.
- Vinyl wallcovering

---

#### Captain's Head

---

- Portlight: (1) Freeman 14.5"x24" oval, opening with screen and privacy cover.
- Vanity with Corian countertop, 5" backsplash, undermounted sink with faucet and cabinet beneath sink.
- Mirrored medicine cabinet above sink.
- Shower stall, bone.
- Shower set.
- Headhunter toilet, bone, with brass flush knob.
- Accessories: towel bars, paper holder, soap dish, towel ring, robe hook.
- Headliner: Luxor Vellum II.
- Floor: Karndean vinyl strip flooring.
- Vinyl wallcovering.
- Ventilation fan on separate switch.
- Privacy door.

---

#### Crew's Stateroom Starboard

---

- Portlight: (1) Freeman 14.5"x24" oval, opening with screen and privacy cover with matching wallcovering.
- (2) single bunk beds (upper and lower) with 5" high density foam mattresses, wood keepers.
- (2) Mattress covers, (2) bedspreads, (2) pillows with shams, (2) sheet sets per mattress.

- (2) reading lights affixed to forward wall, outboard, (1) upper and (1) lower.

- Hanging locker: aromatic cedar lined with light and 2.5 lb. dry chemical hand-held fire extinguisher, and removable panel in aft wall to access machinery space aft.
- (2) drawers inset into inboard wall utilizing space beneath settee seats in crew's lounge, (1) fore and (1) aft.
- Vinyl wallcovering.
- Floor: Karndean vinyl strip flooring.

---

#### Crew's Head

---

- Vanity with Corian countertop, with 5" backsplash, undermount sink with faucet and cabinet beneath sink.
- Mirrored medicine cabinet above sink.
- Shower stall, bone.
- Shower set.
- Headhunter toilet, bone, with brass flush knob.
- Accessories: towel bars, paper holder, soap dish, towel ring, robe hook.
- Headliner: Luxor Vellum II.
- Floor: Karndean vinyl strip flooring.
- Vinyl wallcovering.
- Ventilation fan on separate switch.
- Privacy doors.

---

#### Crew Stateroom Port and Storage Area

---

- Privacy door.
- Single bunk with 5" high density foam mattress and wood keeper, with storage below.
- (1) reading light affixed to forward bulkhead.
- Hanging locker: aromatic cedar lined with light and 2.5 lb. dry chemical hand-held fire extinguisher,
- Storage locker above battery bank



## WEST BAY SHIPYARDS LTD. ONE YEAR LIMITED WARRANTY

- 1) **COMPREHENSIVE**  
West Bay Shipyards Ltd. (hereinafter called "West Bay") warrants to the original retail purchaser of a West Bay SonShip Yacht (hereinafter called the "Yacht") that it will repair or replace, at the sole discretion of West Bay, any part or component manufactured by West Bay which is proven to the sole satisfaction of West Bay to be defective within one (1) year of delivery of the Yacht to the original retail purchaser, provided the Yacht has been subjected to normal use and service as a non-commercial Yacht, and has been used, serviced and maintained in accordance with West Bay's recommendations as specified in the owner's manual supplied with the Yacht. This warranty is limited as set out below.
  - 2) **HOUSE AND SUPERSTRUCTURE**  
West Bay warrants to the original purchaser, or to a registered subsequent purchaser as provided herein, that it will repair or replace, at the sole discretion of West Bay, any part or component of the house or superstructure which has been proven to the sole satisfaction of West Bay to have been defective within one (1) year of delivery of the Yacht to the original retail purchaser, provided the Yacht has been subjected to normal use and service as a non-commercial Yacht, and has been used, serviced and maintained in accordance with West Bay's recommendations as specified in the owner's manual supplied with the Yacht. This warranty is limited to the structural components of the house and superstructure only and does not apply to discoloring, caulking, paint blistering, or fiberglass blistering attributable in the sole opinion of West Bay to osmosis.
  - 3) **HULL**  
West Bay warrants to the original purchaser, or to a registered subsequent purchaser as provided herein, that it will repair or replace, at the sole discretion of West Bay, any part or component of the Hull, Pan/Grids or Stringers which has been proven to the sole satisfaction of West Bay to have been defective within one (1) year of delivery of the Yacht to the original retail purchaser, provided the Yacht has been subjected to normal use and service as a non-commercial Yacht, and has been used, serviced and maintained in accordance with West Bay's recommendations as specified in the owner's manual supplied with the Yacht. This warranty is limited to the structural components of the Hull, Pan/Grids and Stringers only and does not apply to discoloring, caulking, paint blistering, or fiberglass blistering attributable in the sole opinion of West Bay to osmosis. This warranty does not apply to the Hull, Pan/Grids or Stringer systems that have been altered, or in the event the Yacht is re-fitted after delivery to the original retail purchaser with engines of a type and size not recommended by West Bay.
  - 4) West Bay will register and honor a transfer of this warranty to subsequent purchasers of the balance remaining under paragraphs 2 and 3 of this warranty provided that such subsequent purchaser registers with West Bay by notifying West Bay and paying, within 30 days of the transfer of the ownership of the Yacht, and paying a warranty registration fee of \$500 USD payable at the time of West Bay being notified of the change in the Yacht's ownership.
- THIS WARRANTY DOES NOT COVER:**
- a) any part or component not manufactured by West Bay;
  - b) any Yacht, equipment, or component that has been subjected to or affected by any unauthorized alteration or modification (any alteration to a Yacht or component requires the written consent of West Bay);
  - c) any equipment, or component including but not limited to televisions, computers, entertainment equipment, navigation and communication equipment that has been subjected to or affected by any alteration or modification made by West Bay on purchaser's instructions, which alteration or modification causes the original manufacturer's warranty to be void;
  - d) engines, transmissions, controls, batteries, appliances, rudder posts and bearings, trim tab hydraulic rams, propellers, shafts, or other equipment, accessories, or components which are not manufactured by West Bay, whether or not warranted by other manufacturers;
  - e) gel coats, paints, varnishes, or other finishes, including, cracking, crazing, discoloration of fabrics, canvas, mirrors, glass, natural stone products, stainless steel, or any other plated finishes;
  - f) osmosis blistering, if the original gel coat surface has been altered in any way including repair, application of any coat other than marine anti-fouling bottom paint, improper surface preparation for such paint or excessive sanding or sandblasting or other surface abrasion;
  - g) any Yacht which has been misused, used in a negligent manner, used for racing, used for rental, charter, military or other commercial purposes, used without normal maintenance, operated contrary to instructions furnished by West Bay, or any manufacturer of any of the components of the Yacht, or operated in violation of any federal, state, province, coast guard or other governmental agency laws, rules or regulations;
  - h) labour, shipping, handling, duty and brokerage charges to refit any materials, equipment, or component replaced or repaired under any other manufacturer's warranty;
  - i) any loss, cost or expense arising as a result of contamination of any part or component of the Yacht by biological agents including bacteria, mildew, mold, fungi, mycotoxins, spores, viruses, or any colony or group of the foregoing, or any other microorganisms or biological agents;
  - j) except to the extent limited by applicable state law, any incidental, consequential or indirect damages caused as a result of any defect in workmanship, repair or replacement; and
  - k) loss of time, inconvenience, rental charges, travel expenses, loss of use, dockage fees, towing and/or service charges, loss of or damage to personal property, including other non-defective parts or components of the Yacht, or other loss howsoever caused is not covered by this Warranty.
- 3) Estimates of Draft, fuel consumption capacities, or any estimates of performance characteristics or measurements are estimates only and are not covered by this Warranty. No warranty is made, either express or implied, as to performance or any characteristic of performance.
  - 4) This written Warranty is meant to be a complete and exclusive statement of the terms of all West Bay warranties and supersedes any and all representations and warranties, written or oral, made with respect to the Yacht.
  - 5) Except to the extent required by applicable state law, there are no other warranties, express or implied that extend beyond the face of this instrument. This Warranty is restricted, solely and expressly, only to the repair or replacement of any defect as defined herein and is in lieu of all other warranties express or implied. This Warranty gives the purchaser specific legal rights, and the purchaser may also have other rights under applicable state law.
  - 6) a) West Bay invites any purchaser to inspect the Yacht before purchase, with any experts (mechanical or otherwise) to determine to the purchaser's satisfaction, the condition of the Yacht prior to purchase.  
b) This Warranty shall commence upon purchaser taking delivery of the Yacht and upon executing a Final Acceptance document.
  - 7) Only dealers and other repair facilities expressly authorized by West Bay may carry out repairs as contemplated herein. After an authorized dealer or an authorized repair facility has been assigned by West Bay for warranty work, reimbursement for labour costs provided by the such dealer or repair facility under this Warranty will be based upon a rate and schedule established by West Bay. This reimbursement may be directly to the authorized dealer or authorized repair facility.
  - 8) West Bay reserves the right to improve its products through change of design and/or material without obligation to incorporate such change in Yachts of prior manufacture. West Bay does not have a model year as such, and changes are incorporated in Yachts by the manufacturer as the same are constructed from time to time. West Bay does not warrant or represent that a particular Yacht is of a particular model year.
  - 9) Any alleged defect must be reported to West Bay in writing within Thirty (30) days of the discovery of same and in any event within the applicable warranty period following delivery and acceptance whichever first occurs with the following information:
    - a) Owner's name and address
    - b) Yacht serial number (hull number)
    - c) Information as to the nature of the alleged defect
    - d) Date actually placed in service
    - e) Accumulated hours and days of service.
  - 10) All warranty claims and other necessary communication in connection with this Warranty must be sent to West Bay at the following address:

Warranty Services Coordinator  
West Bay Shipyards Ltd.  
8295 River Road  
Delta, British Columbia, Canada V4G 1B4